

EN

# SL-DW01

## Wi-Fi Water Leak Sensor Smart Life

▶ User manual



### Product Description

The Wi-Fi Water Leakage Detector is a "detection terminal for water leakage detection". It alerts when water leaks have occurred or will occur in kitchens, restrooms and air conditioning passages promptly, to prevent and eliminate potential leaks. It uses a simple short-circuit technology for micro-innovation, providing a personal residential leak warning service through the cloud sever with Wi-Fi access. The design focuses on early detection, real-time notification, detection and information pushing at anywhere and anytime.

### Applicable Place

Suitable for residential, shopping malls, warehouses, restaurants, parking lots, libraries, schools, hospitals, etc.

### Function Description

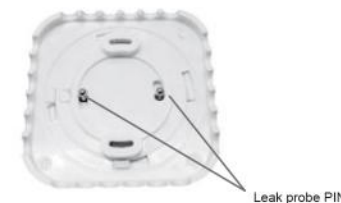
1. Hardware watchdog.
2. Remote transmission of alarm via Wi-Fi network.
3. Low battery indication, daily inspection.
4. Built-in alarm light and network indicator.
5. More than 1 year of battery life.

### Electrical Specifications

Power: 2xAAA 3V dry battery  
 Power consumption: alarm current <300mA, standby current < 10pA  
 Wi-Fi: 2.4Ghz 802.11 a/b/g/n (Wi-Fi 4)  
 Alarm: LED flashing and network LED  
 Monitoring range: 3 square meters  
 Working temperature: 0~+50°C  
 Operating humidity: 10%~95% RH

### Installation and Test

Note: Make sure the APP configuration is complete before installation.



1. Install the battery to power the detector. Place it in an appropriate location (normally right below the water leakage source), like the kitchen sink, toilet tank, air conditioning drain, etc. -
2. The red light flashes one time indicates that the device is working normally. Use the ejector pin to press the hole inside the RESET button for 5 seconds, the red light will flash quickly, indicating the detector is connecting to the WiFi network. When the red light keeps on for a while and then off, it means that the detector has accessed the cloud server successfully. -
3. The probe PIN will be triggered once water leaks happened. When an alarm occurs, the red LED will flash once and send a leakage information to the cloud server.

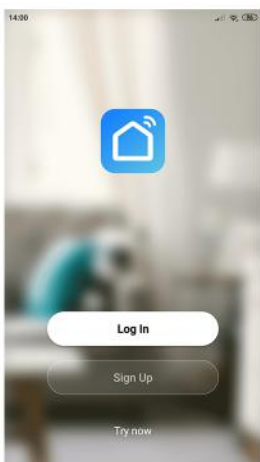
### APP Instruction

#### 1. Download "smart life" APP

Search "smart life" in application market to download and install the App.

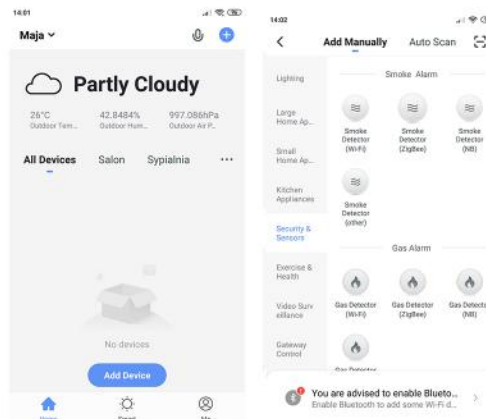
#### 2. Registration

Click the APP and register an account according to the APP description.

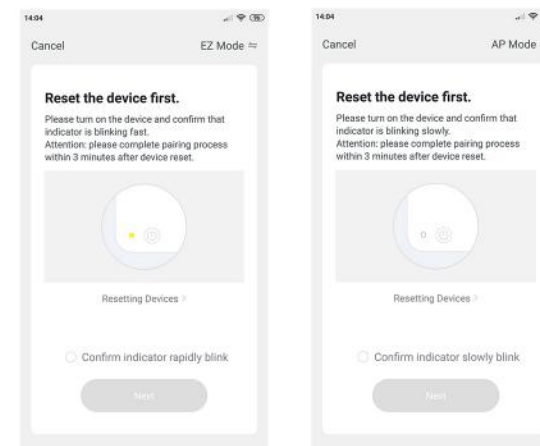


#### 3. Add or delete devices

Click the APP and login, click "Add Device" —> Security Sensor —> Sensor (Wi-Fi)

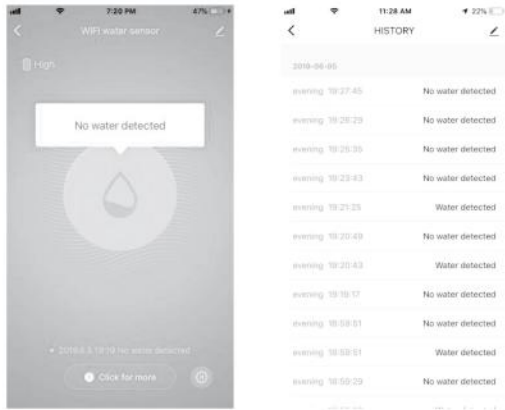


Install the battery to make the power on. Use the ejector pin to press the button "RESET" and hold on for 5 seconds to enter into the Wi-Fi configuration state (the red indicator on the front flashes quickly indicates that it is in the EZ mode configuration. If the indicator light flashes slowly, it indicates the process under AP mode). The APP interface displays two modes which can be switched to each other before configuration start.



Input the Wi-Fi SSID and password according to the APP prompt and start connection, wait about 60 seconds to complete the device's network configuration and its connection to the Tuya cloud server, synchronization with the APP. It will jump to the APP operation and monitoring interface directly when the device is added completely.

You can modify the device name or share the device to other people on the APP directly. The device operation interface can see its status, alarm, offline and alarm release, etc., check history record and other setting options.

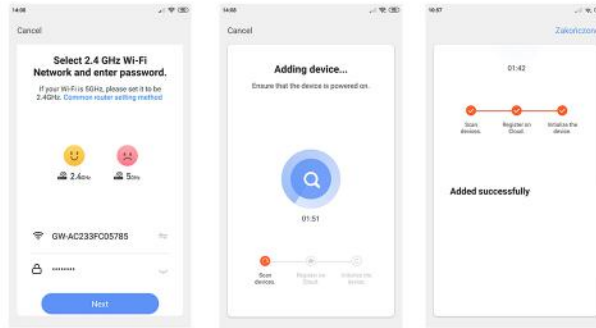


**Remarks:**

Ensure the device and APP work under the same Wi-Fi network to make sure the validity of the device which is set through EZ mode or AP mode, then the device information recognized by the APP is valid. When the EZ mode does not work due to Wi-Fi network configuration, use AP mode to configure the device and APP.

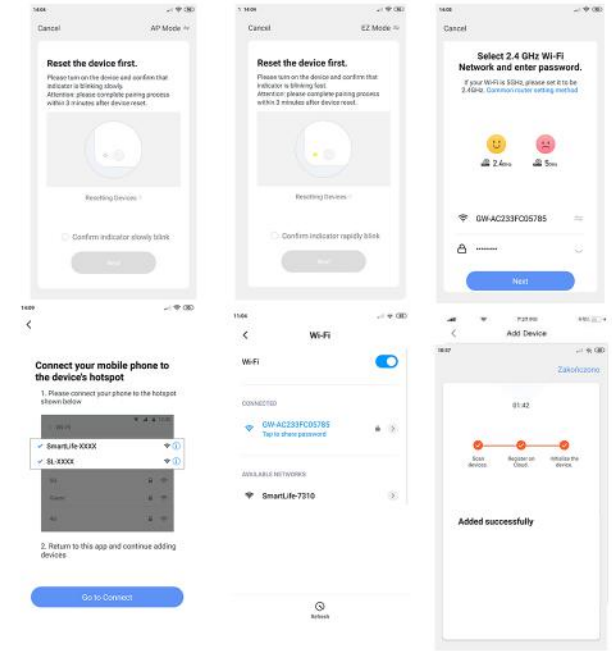
**EZ Mode**

When configuring in EZ mode, make sure that the Wi-Fi network connect to the Internet normally, then ensure the APP and the device work in the same Wi-Fi network. Input the SSID and password to connect the device with cloud server to accomplish the configuration. If need different Wi-Fi network, use "Change network" through the APP.



**Mode AP**

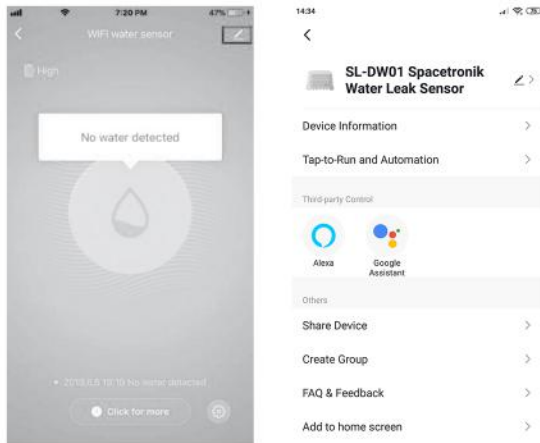
When configuring in AP mode, make sure that the Wi-Fi network connect to the Internet normally, then ensure the APP and the device work in the same Wi-Fi network. Input the SSID and password, to run the App (mobile or tablet) by connecting the Wi-Fi network "SmartLife-xxxx" in the AP mode (select by the Wi-Fi Network list), return to the APP when connect successfully, it will complete configuration automatically.



When the device is added to the Tuya smart user account, the indicate light goes out, the APP jumps to the operation interface, indicates that the device is added successfully. If not succeed, repeat the steps until add it successfully.

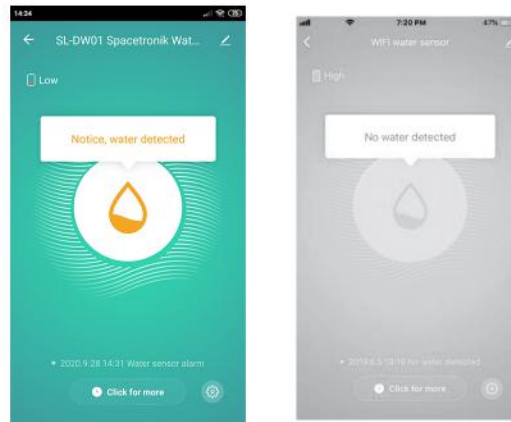
**Delete device**

Select the "Edit" icon to enter into the operation interface of the device. Click "Remove device" to delete it.



**Water leakage detection alarm**

Once the device detects the status changing, the red indicator on the front will flash one time, and display different status according to the states. The alarm data is delivered to the cloud server, the cloud server will deliver the alarm information to the APP simultaneously. The APP interface displays as below:



**Other operations**

Other operations of the device and APP, please pay attention to the design and updates of the APP and the device.

Frequency band: 2412 – 2472 Mhz  
Maximum radio-frequency power: 17 dBm

Hereby DMTrade Mikolaj Tomaszewski declares under our sole responsibility that the product SL-DW01 is in conformity with following directives: RED (2014/53/EU), RoHS (2011/65/EU + 2015/863/EU). Full document (declaration of conformity) is available for download from [www.dtrade.pl](http://www.dtrade.pl).

The WEEE symbol (the crossed-out wheeled bin) using indicates that this product is not home waste. Appropriate waste management aids in avoiding consequences which are harmful for people and environment and result from dangerous materials used in the device, as well as improper storage and processing. Segregated household waste collection aids recycle materials and components of which the device was made. In order to get detailed information about recycling this product please contact your retailer or a local authority.

Made in P.R.C for:  
DMTrade; Wisniowa 36, 64-000 Koscian, Poland  
[www.dtrade.pl](http://www.dtrade.pl)

