

A Brinno BCC200 camera is mounted on a black metal bracket attached to a vertical pole. The camera is encased in a clear protective housing. Its screen displays 'READY' in green text, with 'SND' and 'AWB' indicators at the top. Below the screen are 'MENU' and 'TIME' buttons, and a large circular 'OK START' button. The background is a blurred construction site with several orange tower cranes against a blue sky with light clouds.

# Construction Camera **Pro**

Brinno BCC200 Sales Kits

**brinno**  
*brilliant innovation*



Aeronautical aluminum alloy clamp assist you to document months of construction into minutes of time lapse video!

# contents

---

intro  
applications  
features  
specifications  
package  
shipping info  
webpage title  
online store category  
keywords  
demo video/ photo  
setting tips  
comparison chart  
FAQ





# intro.

---

## Construction camera PRO with industrial-Grade aeronautical aluminum alloy clamp

Brinno BCC200, the higher-end construction camera bundle with 80-day battery life, is powered by a HDR-sensor and special night-modes perfect use for documenting construction projects, analyzing environmental changes, and an amazing variety of other long-term outdoor photographic

tasks. BCC200 delivers the exceptional time-lapse videos even under the most challenging backlights and/or dark conditions. The new aerospace-grade aluminum alloy clampod's great load capacity increases its convenience for operation.



# High performane HDR video sensor, capture Time Lapse video in any light!

High Dynamic Range (HDR) image sensor produces stunning time lapse video under virtually any lighting conditions, from low light to intense backlighting.



# Aerospace aluminum alloy clampod with heavy duty grip



The industrial-Grade aeronautical aluminum alloy clamp of BCC200 is immensely strong and modified into the best support loadings of up to 40 kgs., which can be fixed onto a wide variety of surfaces, from pipes, cylindrical objects to tree branches...etc. It is easy to use and very stable – no longer have the problem of achieving the desired shooting angle at the construction and/or job sites.

# Amazing 80 days battery life, 4 AA batteries

World record long term battery operated construction camera with outstanding 2.5 months (80 days) of battery life (using a time interval of 30 minutes, 4 AA batteries). Easy and rapid deployment of BCC200 professional construction camera at any site, without the need for wiring or power.

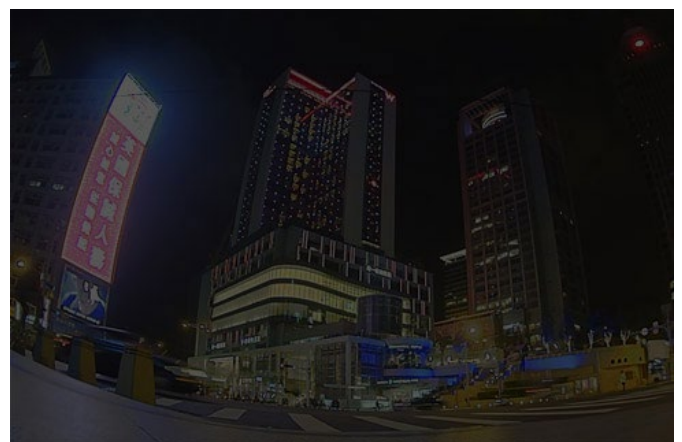


# Professional grade with Low-Light Sensitivity time lapse video mode

Brinno BCC200 construction camera pro has ultra-big pixel size  $4.2\mu\text{m}$ , even in low light situations where other cameras miss details.



**Night Scene:** Special setting for Nighttime photography shooting. Low ISO setting, long exposure time.



**Daylight Scene:** For any Daytime photography.

# Construction Time Lapse Video 1,2,3! Easy solution!

Simple to install and operate on any site. No wires or cabling required. Produces ready-to-view video at the push of a button with no need to spend hours on post-processing. Brinno BCC200 makes time-lapse videos incredibly simple, no technical skill is required.



Select



Shoot



Done

## Time Lapse Video 1, 2, 3!



Video link: <https://youtu.be/6C8Og2YXUFg>

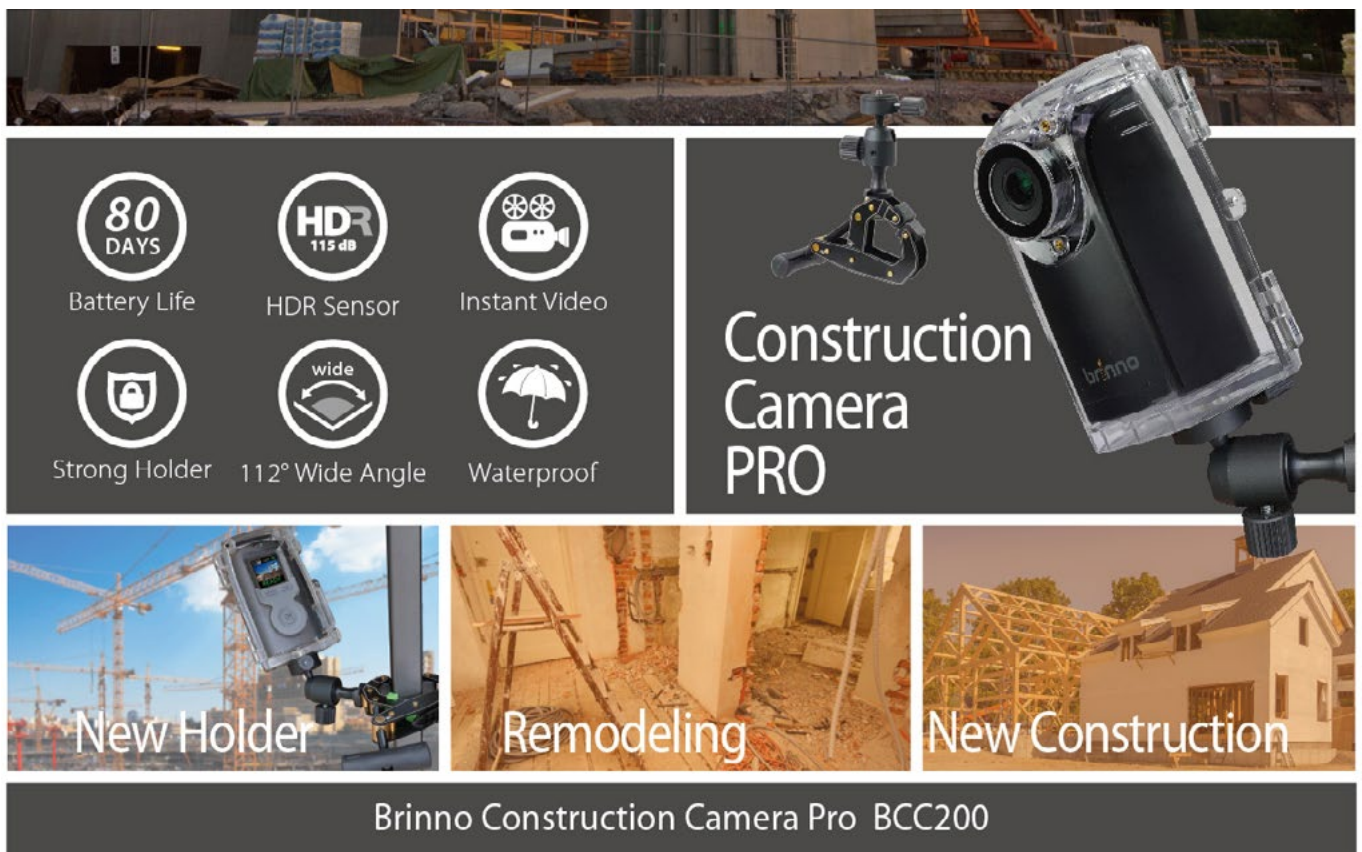


# applications.

---

## Why using Brinno BCC200 construction camera for jobsite project?

Brinno has been a recognized leader in Time-Lapse Cameras. With the industrial-Grade professional construction camera, BCC200, a wire-free, weatherproof camera bundle, offers quick and easy installation, without cumbersome wiring or power requirements. It illustrates the entire project, no matter how many days, months, or years taken, in few minutes instant HDR time-lapse video which presents the project with a high publicity factor on project and marketing management.



The advertisement features a central image of the Brinno BCC200 Construction Camera Pro, a rugged, black, weatherproof camera with a clear protective lens. To the left of the camera, a grid of six icons highlights key features: 80 DAYS Battery Life, HDR 115 dB Sensor, Instant Video, Strong Holder, 112° Wide Angle, and Waterproof. Below the camera, three smaller images show the camera in use: mounted on a crane for 'New Holder', inside a building under renovation for 'Remodeling', and on a construction site for 'New Construction'. The text 'Construction Camera PRO' is prominently displayed next to the camera. At the bottom, a dark banner reads 'Brinno Construction Camera Pro BCC200'.

80 DAYS  
Battery Life

HDR 115 dB  
HDR Sensor

Instant Video

Strong Holder

112° Wide Angle

Waterproof

Construction Camera PRO

New Holder

Remodeling

New Construction

Brinno Construction Camera Pro BCC200



# features.

---



## HDR Video Sensor

High performance HDR video sensor, which helps produce great shots with high contrast, even in challenging lighting conditions like those encountered at night.

---



## Superior Power Saving

World record long term battery operated technique with outstanding 2.5 months of battery life (using a time interval of 30 minutes, 4 AA batteries)

---



## Instant Video

Brinno BCC200 gives you a real Time-Lapse Video, not thousands separate photos, no complicated post-processing!

---



## Aeronautical aluminum clamp

The aerospace-grade aluminium alloy clamp is small and portable while still maintains a great clamping power with great load capacity increases its convenience for operation.

---



## Long term project time lapse video

Setting up and operating Brinno BCC200 Construction Camera Pro takes no effort at all. No editing is required when shooting the long term construction project with BCC200. View months of construction in minutes.



## Produces instant read-to-watch time lapse video

Produces ready-to-view video at the push of a button with no need to spend hours on post-processing

# specification.

## Product info

Product Name	Construction Camera PRO
Model	BCC200
EAN code	4712417430986

## Camera

LCD Screen	1.44" TFT LCD
Waterproof	IPX4 (with the Weather Resistant Housing (ATH120))

## Capture Mode

Time Lapse	Auto generation of Time Lapse video
------------	-------------------------------------

## Image Sensor

Type	1/3" HDR sensor
Dynamic Range	115db
Resolution	1.3 Mega pixel
Pixel size	4.2um
Sensitivity	3650mV/lux-sec (Ultra good low light quality)

## Optics Lens (BCS 019)

Type	CS Mount (Aspherical Glass Lens)
Aperture	F 2.0
Field of View	112°
Focal Length	19 mm (35mm equivalent)
Focus Distance	Manual focus from 1 cm to ∞ (factory setting: 40 cm )

## Shooting Setting

Scene	Daylight, Twilight, Night, Moon, Star
White Balance	Auto, Day, Shade, Cloudy, Fluorescent Light (Cool), Fluorescent Light (Warm), Tungsten Light
Custom Image	Exposure, Saturation, Contrast, Sharpness

## Recording

Time Lapse Video	Format: AVI Resolution: 1280x 720
Memory Storage	SD/ SDHC Card (Supported up to 32 GB)

## Time Interval

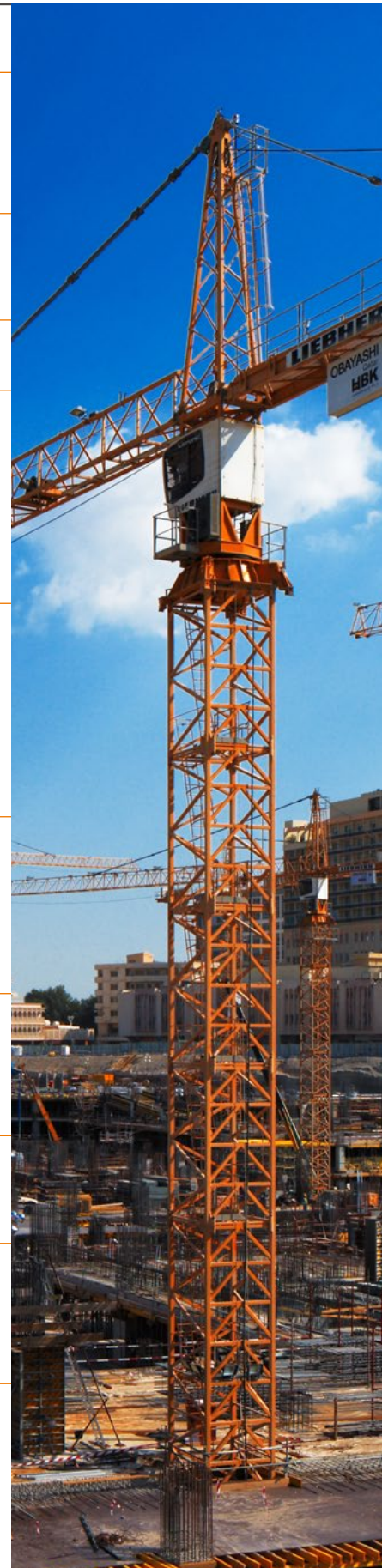
ASAP	Captures 3~ 5 photos in 1 second
Custom	From 1 second to 24 hours

## Power

Power source	Battery: 4 AA Batteries DC IN: 5V (Micro USB connector)
Battery Life	80 days ( 5 minutes time interval)

## Camera Body

Size (DxWxH)	64x 52x 107 mm
Weight	140 g (without batteries)
Color	Black



# package contents.

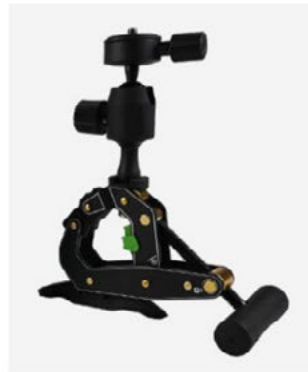
---



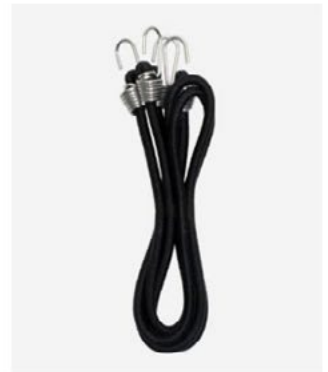
HDR TimeLapse Camera  
TLC200Pro



Dustproof weather resistant  
housing / ATH120



Camera Clamp (Takeaway T1)



Bungee cords

## BCC200 package contents

HDR TimeLapse Camer (TLC200Pro)

Dustproof weather resistant housing (ATH120)

Camera Clamp (Takeaway T1)

Bungee cords

8GB SD Card (32GB maximum)\*

4 AA batteries\*

19mm Lens (35mm Equivalent) wide-angle lens on TLC200Pro

Lens cover for TLC200Pro

Screw driver for TLC200Pro

fasten screws

Instruction manual

\* SD card may or may not be included, please read the package contents listing.



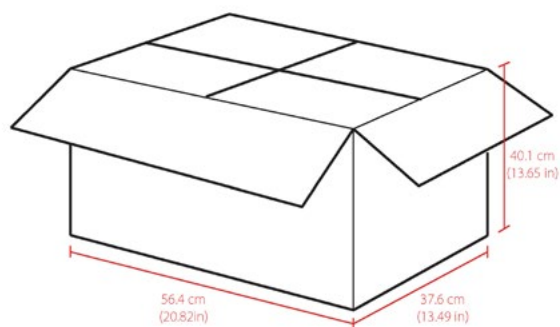
# shipping info.



BCC200 product weight: **0.26kg(0.55 lb)** (Approx.)

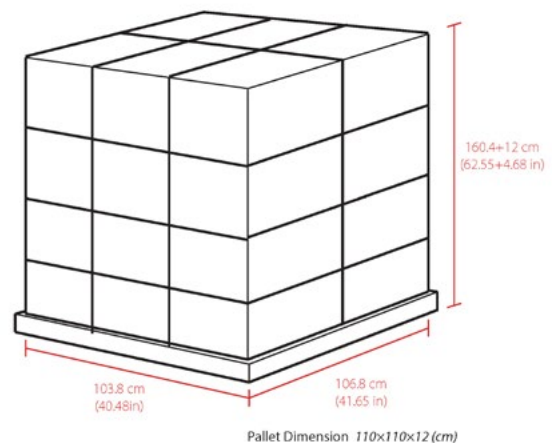
BCC200 total package weight: **0.81 kg(1.79 lb)** (Approx.)

## 20 pcs carton



Units per carton: **20 pcs.**  
20 pcs Carton N.W: **16.2 kg(35.71 lb)**  
20 pcs Carton G.W: **17.2 kg(37.92 lb)**  
Carton Material: **5 layer corrugated carton**  
Material Thickness: **8m/m**

## ocean pallet



1 Pallet is **4** Layers  
1 Layer is **6** Cartons  
Cartons per pallet: **24**  
Units per pallet: **480**

# webpage title.

---

Brinno Construction Camera Pro BCC200

# online store category.

---

Camera & Photo > **Point & Shoot Digital Cameras**

Camera & Photo > **Camcorders**

## Channel:

Electronics consumer/ Garden/ construction/ contractor/ DIY/ Expo company

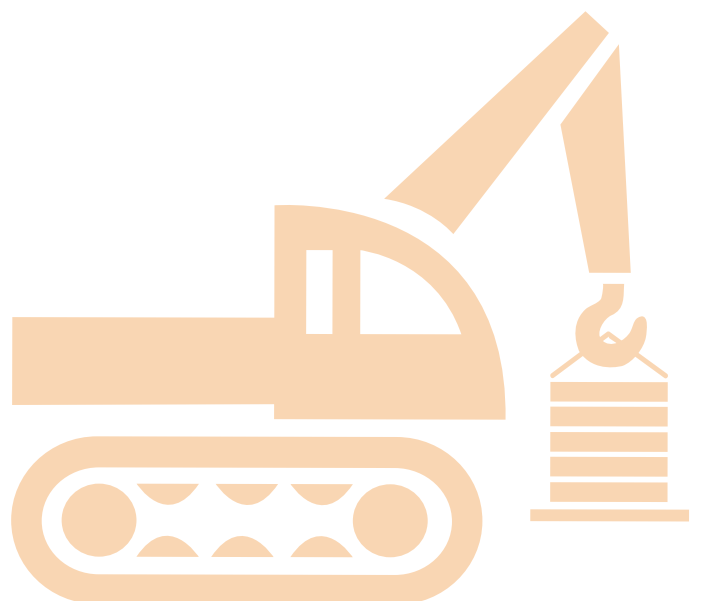
# keywords.

---

Brinno Construction Camera Pro BCC200

Time lapse Construction camera

Time lapse Jobsite camera



# demo video.

---



## Brinno construction camera customer interview

<https://youtu.be/Ct-CK5xdY8o>

## The Big Build - First Rough Cut

## CONSTRUCTION TIME LAPSE MOVIE



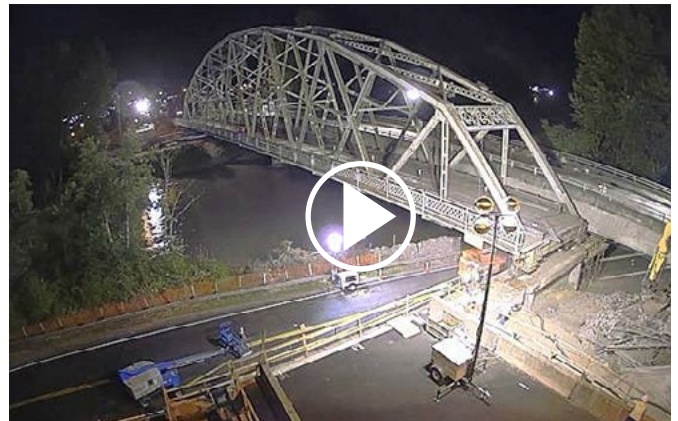
<https://youtu.be/bGKIDd3SSbc>

## US 89 Repair Time-Lapse



<https://youtu.be/vKA0wT9lqoE>

## SR 167 Puyallup River Bridge Move



<https://youtu.be/nwP7zPJfDf4>



Brinno Construction Time Lapse Video Playlist on YouTube

# photo.

---



<https://www.flickr.com/photos/68237664@N02/sets/72157663462239256>



# setting tips.

---

## Normal SOP (working daily 24hrs)

---

camera approach duty period every 29 days(32days)

Time interval: **30 SEC**

Battery life: 4 AA Standard Battery for 29 days(36days), (Energizer Ultimate Lithium for 80 days 108days)

4G can use time. **4.5days**

16G can use time. **18days**

32G can use time. **32days**

Calculator: [http://brinno.com/support/time\\_setting\\_calculator](http://brinno.com/support/time_setting_calculator)

Scene: **Daylight**

Image quality: **Best**

Playback Speed (FPS): **30 frames/sec**

Photo in 1 day: **2880 frames**

Video: **96 sec**

File Size: **980 MB**

## Timer SOP (working daily 8hrs)

---

camera approach duty period every 40 days 78days

Time interval: **30 SEC**

Battery life: 4 AA Standard Battery for 40 days 78days, (Energizer Ultimate Lithium for 120 days 230days)

4G can use time. **12.5 days**

16G can use time. **50 days**

32G can use time. **100 days**

Calculator: [http://brinno.com/support/time\\_setting\\_calculator](http://brinno.com/support/time_setting_calculator)

Scene: **Daylight**

Image quality: **Best**

Playback Speed (FPS): **30 frames/sec**

Timer(ex.): **10:00AM to 17:00PM (8 hrs.)**

Photo in 1 day: **960 frames**

Video: **32 sec**

File Size: **320 MB**



# comparison chart.



Model	BCC100	BCC200
Viewfinder	1.44" LCD	1.44" LCD
Image sensor	1.3 MP	1.3 MP HDR
Resolution	1280 x 720 (16:9)	1280 x 720 (16:9)
Aperture	f/1.2	f/2.0
Focal length (mm)	18 (35mm equivalent)	19 (35mm equivalent)
Field of view	140° (480P) 112° (720P)	112° (720P)
Aspherical lens		V
Interchangeable CS mount lens		V
HDR video		V
Scene setting		V
White balance setting		V
Micro USB output		V
Webcam function		V
Extension port		V
Time interval	0.5 sec, 1 sec-24 hrs	0.3 sec, 1 sec-24 hrs
Battery life	270,000 photos	240,000 photos
Storage media	SD/ SDHC card	SD/ SDHC card
Media included	4GB	4GB
Maximum storage capacity	32GB	32GB
Video format	avi	avi
Weather resistant	IPX4 (With housing ATH110)	IPX4 With housing ATH120)
Stop Motion video	V	V
Still images (JPEG, 1280 x 720)	V	V
Batteries required	V	V
External power	V	V
Holder	Camera Wall Mount (AWM100)	aerospace-grade Aluminum Alloy Camera Clamp



# FAQ.

---

Please go to <http://www.brinno.com/support/faq/tlc>





Brinno Makes Time Lapse Easy