



Product Info

Stand-alone multi switch | Cascadable multi switch | One to four positions | Line amplifier | Accessories

Stand-alone multi switch

TMP 5x/8x Series for one satellite position

All subscribers are equal!

- but until now, some were more equal than others

The TMP 5x / 8x Series is an excellent solution to the dilemma in many stand-alone multi switch installations: The more users/subscribers you want to supply from one multi switch, the longer and different the cables will be.

One system, many subscribers.

TMP units with 24 or 32 subscriber outputs has a feature to compensate for long, medium and short subscriber lines. This is settable in groups of four output lines using a slide switch for 0, 6 and 12 dB attenuation (long, medium, short).

This gives you the best of two worlds: Compact design, one unit for many subscribers even with long and short cables and different cable losses.

Easy adjustments.

All TMP multi switches feature an attenuator for each polarity, which enables you to secure a uniform level no matter where the multi switch is placed. Near or far away from the dish and LNB, the same switch can be used.

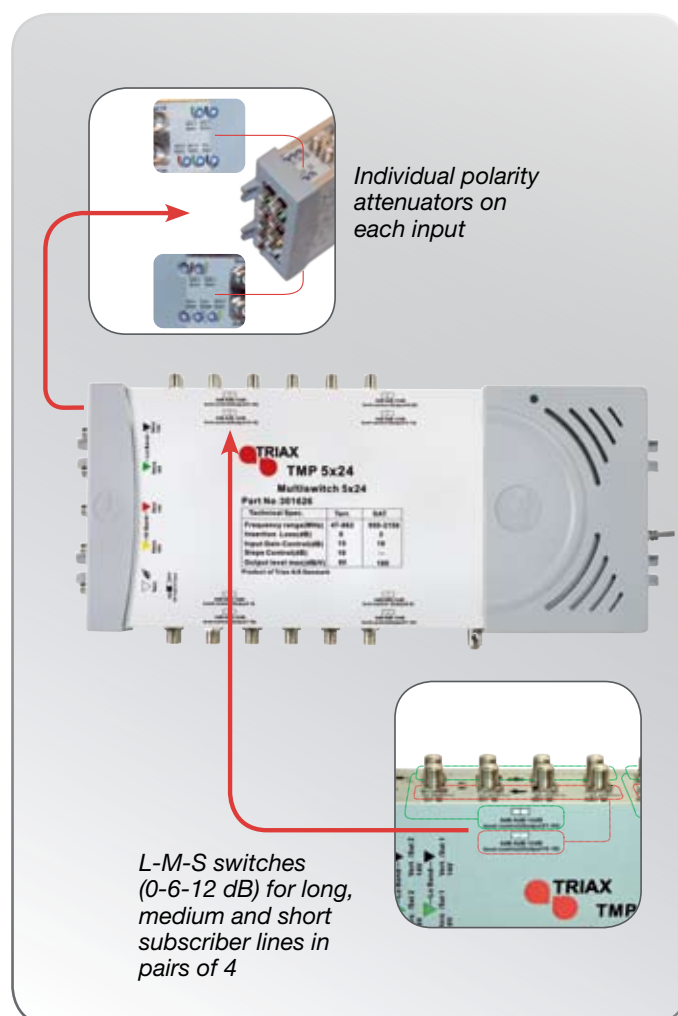
Save the environment.

The TMP Series has a switch mode power supply = minimum power consumption, and low power dissipation.

The **TMP 8x Series** is an extension of the TMP 5x Series that, in addition to the above features, has 4 different terrestrial band inputs for: UHF, DAB, FM and Wideband with individual level attenuators.

- Versions for 8, 12, 16, 24 and 32 subscriber outputs
- Slide switch for long, medium and short range
- Adjustable attenuator per polarity (0-15 dB)
- Low Power consumption
- Compact design, fits into tight spaces
- 4 satellite polarities and 1 terrestrial input, combined output

How to keep a growing number of one satellite users happy



TRIAX - your ultimate connection



TMP 5x32



Technical data

| Type | | TMP 5x8 | TMP 5x12 | TMP 5x16 | TMP 5x24 | TMP 5x32 | TMP 8x24 | TMP 8x32 |
|----------------------------------|--------------------|-----------------------------------------|--------------------|--------------------|--------------------|--------------------|-----------------------------------------|--------------------|
| Part No. | | 301620 | 301622 | 301624 | 301626 | 301628 | 301652 | 301654 |
| Frequency range | | | | | | | | |
| FM | MHz | | | | | | 87.5-108 | 87.5-108 |
| DAB | MHz | | | | | | 215-230 | 215-230 |
| UHF | MHz | | | | | | 470-862 | 470-862 |
| Wideband (VHF/UHF) | MHz | | | | | | 47-862 | 47-862 |
| SAT | MHz | 47-862 950-2150 | 47-862 950-2150 | 47-862 950-2150 | 47-862 950-2150 | 47-862 950-2150 | 47-862 950-2150 | 47-862 950-2150 |
| Number of inputs | | | | | | | | |
| TER | | 1 | 1 | 1 | 1 | 1 | 4 | 4 |
| SAT | | 4 | 4 | 4 | 4 | 4 | 4 | 4 |
| Subscriber outputs | | 8 | 12 | 16 | 24 | 32 | 24 | 32 |
| Connectors | | F-type | F-type | F-type | F-type | F-type | F-type | F-type |
| Insertion loss | | | | | | | | |
| TERR 47-862 MHz | dB | 3.0 | 3.0 | 3.0 | 0.0 | 0.0 | 0.0 | 0.0 |
| SAT 950-2150 MHz | dB | 3.0 | 3.0 | 3.0 | 3.0 | 3.0 | 2.0 | 3.0 |
| Input polarity gain control | | | | | | | | |
| TERR 47-862 MHz | dB | 15 | 15 | 15 | 15 | 15 | 15 | 15 |
| 4x SAT 950-2150 MHz | dB | 10 | 10 | 10 | 10 | 10 | 10 | 10 |
| TERR slope control | dB | 10 | 10 | 10 | 10 | 10 | 10 | 10 |
| Output level control (4 outputs) | | | | | | | | |
| Long cable | dB | / | / | / | 0 | 0 | 0 | 0 |
| Medium cable | dB | / | / | / | 6 | 6 | 6 | 6 |
| Short cable | dB | / | / | / | 12 | 12 | 12 | 12 |
| Isolation | | | | | | | | |
| Horizontal/Vertical | dB | 30 | 30 | 30 | 30 | 30 | 30 | 30 |
| TERR - SAT | dB | 32 | 32 | 32 | 32 | 32 | 32 | 32 |
| SAT - TERR | dB | 32 | 32 | 32 | 32 | 32 | 32 | 32 |
| Out/out - TERR | dB | 30 | 30 | 30 | 30 | 30 | 30 | 30 |
| Out/out - SAT | dB | 30 | 30 | 30 | 30 | 30 | 30 | 30 |
| Input return loss | | | | | | | | |
| TERR | dB | 10 | 10 | 10 | 10 | 12 | 10 | 10 |
| SAT | dB | 10 | 10 | 10 | 10 | 12 | 10 | 10 |
| Output return loss | | | | | | | | |
| TERR | dB | 8 | 8 | 8 | 8 | 10 | 8 | 8 |
| SAT | dB | 8 | 8 | 8 | 8 | 10 | 8 | 8 |
| Max. output level | | | | | | | | |
| TERR (IMA3 / -60 dB) | dBμV | 95 | 95 | 95 | 95 | 95 | 95 | 95 |
| SAT (IMA3 / -35 dB) | dBμV | 100 | 100 | 100 | 100 | 100 | 100 | 100 |
| Line power | | | | | | | | |
| Voltage (Switched TERR) | V | 12 | 12 | 12 | 12 | 12 | 12 | 12 |
| Current (Switched TERR) | mA | 50 | 50 | 50 | 50 | 50 | 50 | 50 |
| Switching commands | VDC/ kHz | 13V / 18V 13V - 22 kHz / 18 - 22 kHz | | | | | 13V / 18V 13V - 22 kHz / 18 - 22 kHz | |
| Switching mode power supply | VAC Hz VDC/A | 180 - 264 47 - 63 18 / 1.5 | | | | | 180 - 264 47 - 63 18 / 1.5 | |
| LNB current, max. | mA | 600 | | | | | 600 | |
| Dimensions | | | | | | | | |
| Width | mm | 190 | 240 | 240 | 340 | 340 | 340 | 340 |
| Height | mm | 157 | 157 | 157 | 157 | 157 | 157 | 157 |
| Depth | mm | 51 | 51 | 51 | 51 | 51 | 51 | 51 |

Also available in the TMP Series:

TMP 5/8/9 IN: Push-On Earth Bond Bars
 TMP 4/6/8/12/16 OUT: Push-On Earth Bond Bars
 TMP 9x8/12/16/24/32: 2 position stand-alone multi switch (2008)

TRIAX A/S

Bjørnkærvej 3 • DK-8783 Hornsyld
 +45 76 82 22 00 • +45 75 68 79 66
 mail: triax@triax.dk • www.triax.com



TRIAX - your ultimate connection